

Grease Guns

PRESSOL

One Hand Grease Guns

one hand operated

- Ø piston 8 mm
- connection: M 10 x 1
- wall thickness of tube: 1.0 mm
- loading grease cartridge 400 g
- L-design handle
- lacquering: silver
- capacity 500 ccm
- single carton box packing

Art. No. **12 250**

with straight spout (150 mm)



One Hand Grease Guns

one hand operated

- Ø piston 8 mm
- connection: G 1/8"
- wall thickness of tube: 1.0 mm
- loading grease cartridge 400g
- L-design handle
- lacquering: silver
- capacity 500 ccm
- single carton box packing

Art. No. **12 270**

with straight spout (150 mm)



Compressed Air Grease Guns

with hydraulic coupler with 4 jaws

- Ø piston 6 mm
- connection: M 10 x 1
- wall thickness of tube 1.0 mm
- pressure ratio: 50:1
- loading grease cartridge 400 g
- L-design handle
- lacquering: silver
- capacity 500 ccm
- single carton box packing

Art. No. **18 071**

with angled spout (150 mm)



Compressed Air Grease Gun

with precision machined coupler with 4 jaws

- Ø piston 6 mm
- connection: M 10 x 1
- wall thickness of tube 1.0 mm
- pressure ratio: 50:1
- loading grease cartridge 400 g
- L-design handle
- lacquering: silver
- capacity 500 ccm
- single carton box packing

Art. No. **18 072**

with high pressure hose
(11 x 300 mm)



Grease Guns

PRESSOL

Grease Gun, Standard

manually lever operated
with hydraulic coupler, with 4 jaws

- Ø piston 8 mm
- connection M 10 x 1
- wall thickness of tube 1 mm
- loading grease cartridge 400 g
- L-design handle
- lacquering: silver
- capacity 500 ccm



Art. No. **12 632 (12 632 980)**

with angled spout (150 mm)
packed in polybag

Art. No. **12 634**

with angled spout (150 mm)
packed in carton packing

Art. No. **12 630 (12 630 980)**

with high pressure hose (8 x 300 mm)
packed in polybag

Art. No. **12 633**

with high pressure hose (8 x 300 mm)
packed in carton packing



Industrial Grease Gun

manually lever operated
with precision machined coupler with 4 jaws

- Ø piston 9 mm
- connection M 10 x 1
- wall thickness of tube 1.5 mm
- variable stroke system
- loading grease cartridge 400g
- T-design handle
- lacquering: graphite-grey
- capacity 500 ccm
- filling valve

Art. No. **12 675**

with angled spout (150 mm)



Industrial Grease Gun "Elite"

body made of galvanized steel

- Ø piston 9 mm
- M 10 x 1 filling nipple
- wall thickness of tube 1.0 mm
- variable stroke system
- loading grease cartridge 500 g
- T-design handle
- lacquering: galvanized
- capacity 750 ccm
- display carton packing

Art. No. **12 678**

with retention adapter



Grease Nipple Assortments

various sizes, packed in transparent
sales box

Art. No.	pcs per set
16 092	70
16 090	140
16 099	387



16 092



16 090



16 099

Grease Gun Accessoires



Button Head Couplers

flat design, M 10 x 1 - female
for button head grease nipples,
slide on type, M- and T-nipples



Art. No.	connection
12 061	16 mm

Button Head Couplers

flat design, M 10 x 1 - female
for button head grease nipples,
M- and T-nipples



Art. No.	connection
12 060	10 mm
12 062	16 mm

Button Head Couplers

flat design, M 10 x 1 - female
for button head grease nipples,
M- and T-nipples



Art. No.	connection
12 063	22 mm

Angled Connectors

for button head grease nipples,
steel galvanized - 90° angle



Art. No.	connection
12 035	M 10x1 - male
12 035 805	G 1/8" - male

Bayonet Couplers

for all bayonet type grease nipples,
galvanized, 14 mm
size: 20 x 41 mm



Art. No.	connection
12 013	M 10x1 - female
12 023	G 1/8" - female

Quick Release Adapters

for hydraulic coupler,
steel galvanized, 12 mm
size: 18 x 31 mm



Art. No.	connection
12 006	M 10x1 - female
12 006 125	G 1/8" - female

Hydraulic Couplers

with 4 jaws, Ø 15 mm for H-nipples,
made of galvanized steel



Art. No.	connection
12 631 980	M 10x1 -female
12 731 980	G 1/8" - female

Precision Machined Couplers

with 4 jaws, turned, Ø 15 mm for H-nipples,
made of galvanized steel



Art. No.	connection
12 643 980	M 10x1 - female
12 743 980	G 1/8" - female



Push Type Guns

PRESSOL

Oil Suction Guns

steel body - single action,
with flexible transparent hose 350 mm,
with PVC cover, colour: blue



Art. No	ml
12 902	500

Oil Suction Guns

polished brass body, single action,
with angled brass spout 135 mm
with zinc end caps, colour: gold



Art. No	ml
12 935	500

Oil Suction Guns

galvanized steel body, single action,
with flexible transparent hose 350 mm,
with zinc end caps



Art. No	ml
12 907	500
12 908	1000

High Pressure Grease Hoses DIN 1283

reinforcement: polyester, high-strength
burst pressure: 900 bar

Art. No	Art. No	size (mm)
M 10 x 1 male	G 1/8" male	
12 656	12 756	8 x 300
12 666	12 766	8 x 500
12 655	12 755	11 x 300
12 665	12 765	11 x 500



High Pressure Grease Hoses DIN 1283 with Coupler

reinforcement: polyester, high-strength
burst pressure: 900 bar

Art. No	Art. No.	size (mm)
M 10 x 1 male	G 1/8" male	
12 656 810	12 756 810	8 x 300
12 666 810	12 766 810	8 x 500
12 655 809	12 755 809	11 x 300
12 665 809	12 765 809	11 x 500



Push Type Guns for Grease

galvanized steel casing,
for hydraulic and ball type grease nipples
pressure 60 to 80 bar

Art. No	ml
12 362	80
12 363	150
12 365	300



Push Type Guns for Grease

plastic casing, pressure 20 bar
with pointed coupler, funnel type or
with universal coupler, ball type

Art. No	Art. No	ml
pointed coupler	universal coupler	
12 321	12 331	65
12 322	12 332	150



Grease Nipples

Type H1 - DIN 71 412

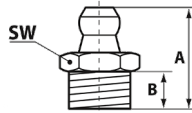
straight, 180°, hexagon version
- galvanized or stainless steel



Art. No. galvanized	size	SW (mm)	A (mm)	B (mm)	C (mm)
15 000	1/4" BSF	7	15	5.5	
15 007	M 6 x 1	7	15	5.5	
15 009	M 8 x 1	9	15	5.5	
15 010	M 8 x 1,25	9	15	5.5	
15 013	M 10 x 1	11	15	5.5	
15 014	M 10 x 1,25	11	15	5.5	
15 015	M 10 x 1,5	11	15	5.5	
15 026	1/8" NPT	11	15	5.5	
15 037	G 1/8"	11	15	5.5	
15 071	F 6 x 1 SFG	7	15	5.5	
15 027	G 1/4" NPT	14	19	8	
15 038	G 1/4"	14	16	6.5	

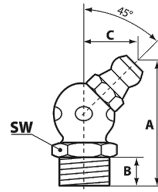


Art. No. stainless st.	size	SW (mm)	A (mm)	B (mm)	C (mm)
15 907	M 6 x 1	7	15	5.5	
15 909	M 8 x 1	9	15	5.5	
15 913	M 10 x 1	11	15	5.5	
15 926	1/8" NPT	11	15	5.5	
15 937	G 1/8"	11	15	5.5	
15 938	R 1/4"	14	17.5	6.5	



Type H2 SK - DIN 71 412

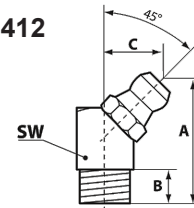
hexagon version - 45°
angled, galvanized



Art. No.	size	SW (mm)	A (mm)	B (mm)	C (mm)
15 100 140	1/4" BSF	9	23.5	5.5	10.5
15 107 140	M 6 x 1	9	23.5	5.5	10.5
15 108	M 7 x 1	10	23.5	5.5	10.5
15 109 140	M 8 x 1	9	23.5	5.5	10.5
15 110 140	M 8 x 1,25	9	23.5	5.5	10.5
15 113 140	M 10 x 1	11	25	5.5	11.5
15 115 140	M 10 x 1,5	11	25	5.5	11.5

Type H2 VK - DIN 71 412

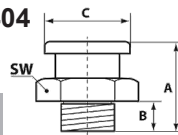
square version - 45°
angled, galvanized



Art. No.	size	SW (mm)	A (mm)	B (mm)	C (mm)
15 172	F 8 x 1 SFG	9	20.5	5.5	10.5
15 173	F 10 x 1 SFG	11	20.5	5.5	11
15 100	1/4" BSF	9	23.5	5.5	10.5
15 107	M 6 x 1	9	23.5	5.5	10.5
15 109	M 8 x 1	9	20.2	5.5	10.5
15 110	M 8 x 1,25	9	20.2	5.5	10.5
15 113	M 10 x 1	11	20.5	5.5	11.5
15 115	M 10 x 1,5	11	20.5	5.5	11.5
15 137	G 1/8"	11	20.5	5.5	11.5

M1 Button Head Grease Nipples - DIN 3404

hexagon version, galvanized



Art. No.	size	SW (mm)	A (mm)	B (mm)	C (mm)
57 807	M 6 x 1	17	17	6	16
57 809	M 8 x 1	17	17	6	16
57 810	M 8 x 1,25	17	17	6	16
57 813	M 10 x 1	17	17	6	16
57 815	M 10 x 1,5	17	17	6	16
57 817	M 12 x 1,5	17	17	6	16
57 837	G 1/8"	17	17	6	16
57 838	G 1/4"	17	17	6	16

round head



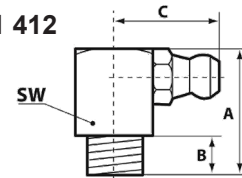
Art. No.	size	SW (mm)	A (mm)	B (mm)	C (mm)
55 807	M 6 x 1	15	16	6	16.5
55 809	M 8 x 1	15	16	6	16.5
55 810	M 8 x 1,25	15	16	6	16.5
55 813	M 10 x 1	15	16	6	16.5
55 815	M 10 x 1,5	15	16	6	16.5
55 837	G 1/8"	15	16	6	16.5
55 838	G 1/4"	15	16	6	16.5

hex. head



Type H3 VK - DIN 71 412

square version - 90°
angled, galvanized



Art. No.	size	SW (mm)	A (mm)	B (mm)	C (mm)
15 200	1/4" BSF	9	18	5.5	14
15 207	M 6 x 1	9	18	5.5	14
15 209	M 8 x 1	9	18	5.5	14
15 210	M 8 x 1,25	9	18	5.5	14
15 213	M 10 x 1	11	18	5.5	15
15 215	M 10 x 1,5	11	18	5.5	15
15 237	G 1/8"	11	18	5.5	15

Manual Pumps & Jerry Cans

Steel Barrel Pumps, Manual Operation

suitable for 60 l, 200 l and 220 l containers,
suction tube length: 480 - 900 mm,
steel discharge spout,
galvanized steel components



Art. No. 13 012



Art. No. 13 012 954



Art. No. 13 016

Art. No. **13 012** - without accessories
delivery rate/stroke 16 l/min.
steel discharge spout

Art. No. **13 012 954** - with accessories/ gear
oil installation kit (1,5 m hose)
delivery rate/stroke 16 l/min.
with anti-drip nozzle

Art. No. **13 016** - without accessories
delivery rate/stroke 10 l/min.
plastic discharge spout

Rotary Pumps

suitable for 60 l, 200 l containers,
suction tube length: 980 mm, steel discharge spout,
delivery rate/stroke 25 l/min.

Art. No. **13 055** - without accessories

Art. No. **13 056** - with accessories
complete with discharge hose 2 m length,
hose clips, anti-kink spring



Art. No. 13 055



Art. No. 13 056

Jerrycans - Steel

suitable for liquid fuels
made of pickled sheet steel 0.8 mm
small neck dia. 30 mm, colour olive-green
other colours available upon request
packing. 70 pcs/pallet
manufactured and tested to comply with
German DIN/TÜV/GS and American AS 2906 standard

- without inside coating
- optionally available with inside coating



Art. No	capacity (liter)	height (mm)
CAN 5 L	5	275
CAN 10 L	10	390
CAN 20 L	20	470

Fuel Cans

high density polyethylene
with flexible spout - cover cap
suitable for liquid fuels
UN-approval
colour: red



Art. No	capacity (liter)	height (mm)
21 131	5	237
21 133	10	319
21 137	20	410

Manual Pumps / Waste Oil Disposals

PRESSOL

Manually Operated GREASE Lubrication Systems

manually lever operated
 discharge pressure: up to 550 bar
 burst pressure: 850 bar
 suitable for 20 kg container, Ø 270-310 mm
 dust cover (17 176)
 stabilising-fixing bracket (17 300)
 one hand operated grease gun
 connection M 10 x 1 (17 600)
 spout, straight, M 10 x 1, 150 mm (12 435)
 coupler, 4 jaws, M 10 1 (12 631)
 discharge hose, 1,5 m (17 003)
 suction tube length 510 mm



Art. No. **17 620**

Oil Dispenser Units

14 kg container
 container size 220 x 380 mm
 manually operated
 delivery rate/stroke 85 cm³
 complete set with all accessories
 and foot rest
 colour: grey satin RAL 7040



Art. No. **17 790 mobile**
 with 2 fixed wheels

Grease Dispenser Units

16 kg container
 container size 220 x 380 mm
 manually operated
 deliveryrate/stroke: 10 cm³
 discharge pressure 25 bar
 complete set with all accessories and foot rest
 standard colour: grey satin RAL 7040

Art. No. **17 791**

portable
 with foot rest

Art. No. **17 792**

mobile
 with 2 fixed wheels



Waste Oil Drainers

mobile, air pressured oil evacuation,
 Ø drain bowl 420 mm - volume: 18 l
 telescopic height level: 1180 - 1750 mm,
 male quick release adapter G1/4", NW 7.2
 for rectus coupling
 transparent discharge hose - 2 m
 2 fixed rear wheels, 2 front castor wheels
 standard body lacquering: grey satin RAL 7040
 bowl: blue RAL 5010

Art. No. **27 070**

75 l



Waste Oil Disposals and Oil, Grease & Water supplies

Waste Oil Suction Units

VENTURI System

mobile, 2 airline connections
 recommended air pressure: 6 bar
 male quick release adapter G1/4, NW 7.2,
 for rectus coupling
 with suction hose 2 m with spiral spring
 lever ball valve with suction probe adapters
 for: VW/Audi, Mercedes, BMW, Smart

2 fixed rear wheels, 2 front castor wheels,
 standard body lacquering: grey satin RAL 7040

Art. No. **27 622** 75 l

Art. No. **27 632** 75 l

with visual inspection reservoir 7 l



Waste Oil Drainers-/Suction Units

VENTURI System

mobile, 2 airline connections, Ø drain bowl 420 mm,
 telescopic height level: 1180 - 1750 mm
 male quick release adapter G 1/4, NW 7.2,
 for rectus coupling
 with transparent discharge hose
 lever ball valve with suction probe adapters
 for: VW/Audi, Mercedes, BMW, Smart

2 fixed rear wheels, 2 front castor wheels,
 standard body lacquering: grey satin RAL 7040

Art. No. **27 622 680** 75 l

Art. No. **27 632 680** 75 l

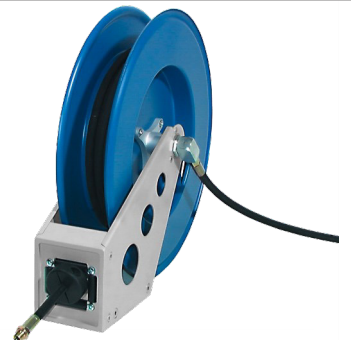
with visual inspection reservoir 7 l



Hose Reels for Oil - Grease and Water/Air supply

Wall/Floor mounting versions
 open or encased hose reels

Art. No. open	Art. No. encased	hose reel	bar	DN	connection threads	hose length
29 142	29 172	oil	120	12	G 1/2" male and female	10 m
29 143	29 173	oil	120	12	G 1/2" male and female	15 m
29 242	29 272	grease	400	6	G 1/4 " male and female	10 m
29 243	29 273	grease	400	6	G 1/4 " male and female	15 m
29 442	29 472	water/air	20	10	G 3/8" male and female	10 m
29 443	29 473	water/air	20	10	G 3/8" male and female	15 m
29 542	29 572	cooling agent	120	12	G 1/2" male and female	10 m
29 543	29 573	cooling agent	120	12	G 1/2" male and female	15 m





Grease / Fresh Oil Supplies



Pneumatic Grease Supply Systems 50:1

high performance, dust cover, follower plate and adjustable stabilising fixing-bracket, high-pressure grease control gun, 360 degree Z-swivel connector, high-pressure grease hose 2 m, pressure reduction valve (8 bar pre-set) male quick release airline connector

mobile - to suit 20 kg container

with trolley
Ø 270-310 mm, with 2 m grease hose

Art. No. **18 417 051**

mobile - to suit 50 kg container

with trolley
Ø 335-385 mm, with 4 m grease hose

Art. No. **18 766 391**

stationary - to suit 20 kg container

Ø 270-310 mm with 2 m grease hose

Art. No. **18 419 051**

stationary - to suit 200 kg container

Ø 540-590 mm

Art. No. **18 785 051** with 4 m grease hose
Art. No. **18 785 056** with 6 m grease hose



mobile - to suit 200 kg container

with trolley
Ø 540-590 mm

Art. No. **18 786 051** with 4 m grease hose
Art. No. **18 786 056** with 6 m grease hose



Pneumatic Grease Supply Systems 50:1

high performance - suction tube
dust cover, follower plate and adjustable stabilising-fixing bracket
pressure reduction valve (8 bar pre-set)
airline connection: G 1/4"

to suit 20 kg container

Ø 270-310 mm suction pipe 600 mm

Art. No. **18 740 051**

to suit 25 - 60 kg container

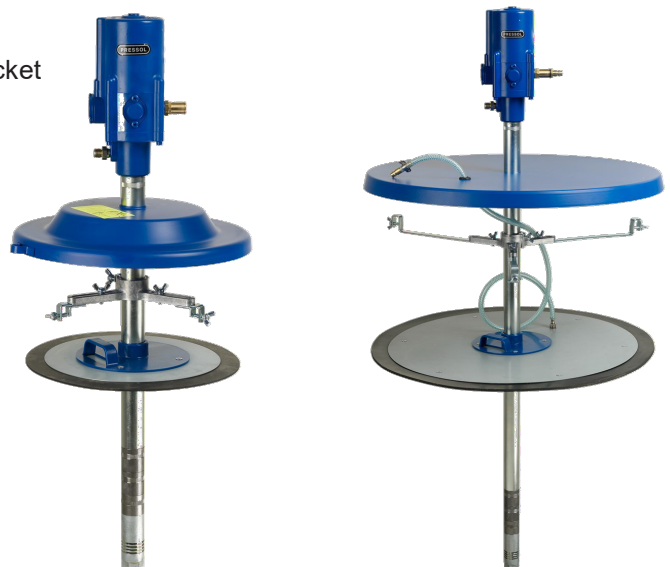
Ø 335-385 mm suction pipe 700 mm

Art. No. **18 760 051**

to suit 200 kg container

Ø 540-590 mm suction pipe 1000 mm

Art. No. **18 780 051**



Grease / Fresh Oil Supplies

Pneumatic Grease Pumps 50:1



recommended air pressure: 8 bar (min. 2 bar/ max. 10 bar)
 cylinder capacity engine 220 cm³, cylinder capacity pump 8 cm³
 quantity of strokes at 8 bar at a free-flow: 220 min.
 pump capacity at 8 bar at a free-flow: 1100 g/min.
 pump pressure at 8 bar air pressure: 400 bar
 air consumption at 8 bar air pressure: 400 l/min.
 airline connection: G 1/4"



suction tube length:

- Art. No. **18 711 051** 600 mm, to suit 20-30 kg container
- Art. No. **18 713 051** 700 mm, to suit 25-60 kg container
- Art. No. **18 716 051** 1000 mm, to suit 200 kg container

Pneumatic Oil and Diesel Pumps 1:1

fresh oil supply
 60 l / min
 pressure side: G 3/4" male
 metal container connection: G 2" male
 airline connection: G 1/4" female
 suction tube length 860 mm G 1" male
 to suit 200 l/220 l metal container
 max. length of discharge hose 10 m



Art. No. **19 135**

Pneumatic Oil and Diesel Pumps 3:1

fresh oil supply
 20 l / min
 pressure side: G 1/2" male
 metal container connection: G 2" male
 airline connection: G 1/4" female
 suction tube length 860 mm G 3/4" male
 to suit 200 l/220 l metal container
 max. length of discharge hose 10 m



Art. No. **19 235**

High Pressure Grease Control Guns

with hydraulic 4-claw coupler
 angled spout

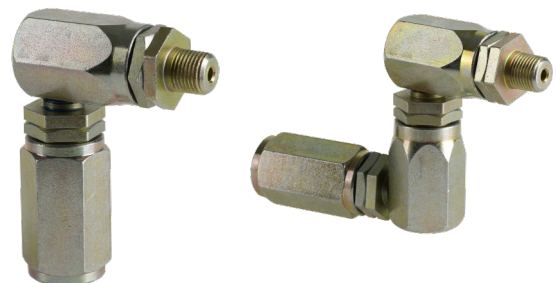
- Art. No. **18 104** G 1/8" female
- Art. No. **18 114** G 1/4" female



Rotary Swivel Connectors

connection G 1/8" male, G 1/4" female
 finish: yellow galvanized steel

- Art. No. **18 082** Z-swivel connector 3 x 360°
- Art. No. **18 083** swivel connector 2 x 360°



Oil Control Valves

swivel connection G 1/2" female, galvanized steel spout
 operating pressure: 70 bar, automatic anti-drip nozzle
 manual switch-off

Art. No. **19 718**



Fuel Oil / Diesel Supplies

PRESSOL

PREMAxx Dieselpumpsets

not selfpriming with 4 m discharge hose and 1.6 m suction hose
with on-off switch and motor-thermal-protection
hose connection: G 1" female, for 200 l containers and tanks
suction height: 2,5 m - discharge height: 15 m
drum connection: G 2" male

Art. No.	l/min.	v/hz	control gun	with...
23 731	52	230/50	standard	2 pin plug
23 737	52	230/50	automatic shut-off	2 pin plug
23 731 932	52	230/50	standard	13A BS plug
23 737 932	52	230/50	automatic shut-off	13A BS plug
23 721	43	24	standard	tapping clamps
23 727	43	24	automatic shut-off	tapping clamps
23 711	38	12	standard	tapping clamps
23 717	38	12	automatic shut-off	tapping clamps



MOBIFixx Dieselpumpsets

selfpriming with 4 m discharge hose and 1.6 m suction hose
with on-off switch and 3 m electric connection cable
vane pump with integral bypass
max. suction height: 3m
hose connection: G 1" female

Art. No.	l/min.	v	control gun	with...
23 015	35	12	standard nozzle	battery clips
23 006	35	12	automatic shut-off nozzle	battery clips
23 015 824	35	24	standard nozzle	battery clips
23 006 824	35	24	automatic shut-off nozzle	battery clips



Air Maintenance Units

complete with pressure regulator, manometer,
moisture separator and in-line lubricator, recommended
for use with pneumatic oil and grease pumps
connection: G 1/4" male, max. operating pressure 10 bar
with male quick release coupler
and wall mounting bracket


Art. No. 20 218 950